

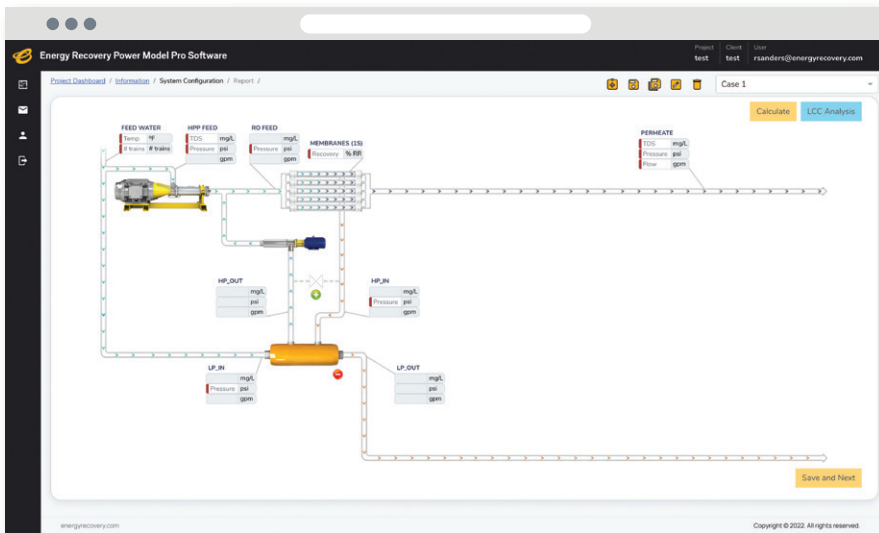
power model PRO

A cloud-based configuration tool to plan for industrial wastewater or desalination projects.

Experience a better way to design, plan, and optimize

Helping you build customizable projects and share vital information with other stakeholders, **Power Model Pro** is a secure, easy-to-use cloud-based product configurator tool that allows you to optimize the hydraulic pumping system of a reverse osmosis system using our products.

After establishing our award-winning PX® Pressure Exchanger® products as a critical component for desalination systems, it has been our goal to provide a tool that gives you the power to design and select suitable Energy Recovery products, predict equipment performance, and determine energy consumption. Power Model Pro features an easy-to-use interface where you provide information on your project. It will generate a report that will help us guide your project with our team, making the estimation and proposal process for industrial wastewater or desalination projects easier than ever before.



A straightforward user experience that shares configurations

Ready to plan your next project?

For more information, please visit energyrecovery.com. To register, please reach out to your sales representative or contact desalsales@energyrecovery.com.

POWER MODEL PRO BENEFITS

- All-in-one platform that enables energy recovery device (ERD) and pump selection and performance projection, without need for external software
- Cloud-based platform that's secure and protected
- Featuring a wide range of our products to design a configuration that works for your needs
- Delivers shareable report that includes potential energy savings

The most trusted ERD for water-based projects

Our PX® Pressure Exchangers®, turbochargers, and pumps offer a full slate of energy recovery devices that cover a range of pressure levels and flow rates to accommodate any size plant, or multiple stages of a membrane-based industrial wastewater treatment system. With over 30,000 PX ERDs supplied in over 100 countries, Energy Recovery is a trusted innovator with the most widely adopted, field-proven energy recovery device on the market.

For the last 30 years, we've pioneered technologies that have become the industry standard for energy recovery solutions.

